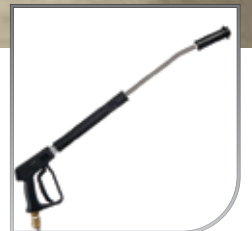




**Spray Master Technologies®**  
**KennelCleaning.com**



**SPRAY MASTER TECHNOLOGIES' WALL MOUNT™ and Portables CATALOG 2016**



# Welcome to SMT

KennelCleaning.com 1.800.548.3373



Greetings,

I wanted to take a moment a personally thank you for the opportunity to introduce Spray Master Technologies (SMT), Animal Care Cleaning Systems. We at SMT are known for our top quality products and superior service after the sale. All SMT products will provide you with a return on investment through: **Water, Sewage, Chemical, Time, and Labor Savings**; while increasing the clean of your facility. We know the importance of providing the best clean for your facility and protecting your animals from disease outbreak. We also understand that it's a MUST to do this efficiently.

SMT has been manufacturing cleaning systems since 1983 and has been the number one selling pressure cleaning system in the animal industry for the past 20 years. Utilizing a SMT system helps protect you and animals from harmful bacteria, odor, and disease while providing the clean you expect. A garden hose will use about 8-10 gallons per minute at 60-80 psi, SMT pumps export 2.2 gallons per minute at 1100 psi - up to **75% savings in water**.

#### The SMT system provides:

- (1) a healthier environment for your animals
- (2) a more pleasant place for your employees to work
- (3) superior odor control, and
- (4) the ability to fight disease by mixing chemical directly at the unit and metering them to the exact dilution ratio every time.

Spray Master Technologies is known for going above and beyond the call of duty when it comes to service. SMT has more than 650 service companies nationwide, and a 24/7 around the clock service hot line. We at SMT want our customers to feel secure in knowing that we're always just a phone call away. Our service technicians are more than happy to help you troubleshoot any problem you have over the phone or dispatch a local service company if needed. At SMT, service is always one of our top priorities.

SMT also offers FREE design services to help make sure that the system you choose is the right one for you, your staff, and your facility. If you would like more information, please feel free to contact me anytime. We at SMT are excited about adding to your success, gaining your trust, and providing your facility with a healthier, cleaner environment.

Sincerely,

Mitch Tisher, National Sales Manager  
Spray Master Technologies  
800-548-3373 ext. 1905 - mtisher@spraymastertech.com



Wall mounted unit provides convenience, dual chemical injection, and a single zone cleaning radius up to 100 ft.



The SMT Kennel 600 provides convenience and the ability to dispense 2 different chemicals at accurate dilution ratios on demand. It's 2HP motor pumps either 2.2 gpm of water at 1100 PSI or 2.9 gpm at 850 PSI. In comparison, a normal garden hose uses a minimum of 8-10 gpm at 60-80 PSI. You will immediately begin saving approximately 75% of the water used to clean your facility, while receiving significantly more pressure.

With the two pressure settings, you are able to dispense chemical on low pressure, and receive a deep scrubbing action on high pressure. Through the precise metering of the chemical and allowing the pressure to do the cleaning, you will also experience chemical, time and labor savings.

This commercial grade unit is complimented with heavy-duty accessories and safety features that ensure compliance and ease of use. The SMT Kennel 600 has anti-siphon and backflow protection, a water level float switch, and a thermal limit switch built in to protect not only the unit, but also the user. Durability, longevity, quality, efficiency, reliability and precision are a few words our customers have used to describe the SMT Kennel 600. Make cleaning more efficient, effective, and easier for your staff with an SMT Kennel 600 Package.

**300-5350** 2.2 GPM / 8.3 lpm @ 1100 PSI / 76 bars, 115V  
2.9 GPM / 11 lpm @, 850 PSI / 59 bars, 115V

**Technical Specifications**

- 1100 PSI / 2.2 GPM
- 850 PSI / 2.9 GPM
- 208V / 230V / 60 Hz / 1 phase / 9A
- Totally Enclosed & Fan Cooled
- 2 HP Baldor Motor
- 3 Cylinder CAT Plunger Pump

- Dual Chemical Injection
- 120° F / 49° C Max
- Features**
- 24" Heat Guard Spray Wand
- Trap Shooter
- Wall and Tile Brush
- 50' Steel Braided Hose
- Rust Free Hose Reel
- Anti-Back Flow Protection
- Stainless Steel Construction
- Thermal Limit Switch

**Included Accessories**



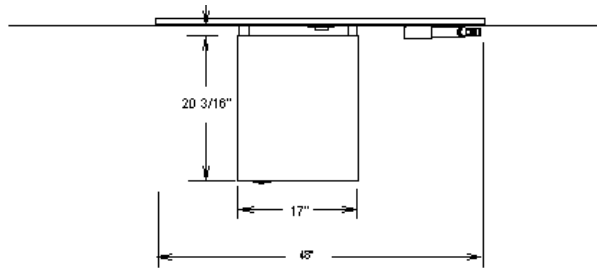
24" Spray Gun Vari-Nozzle # 300-0392

Trap Shooter - # 300-8321

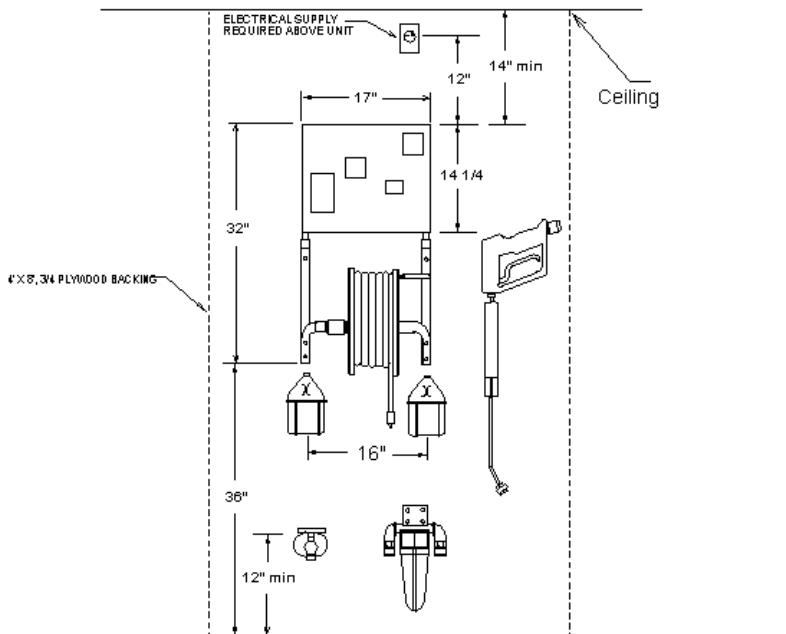


Wall & Tile Brush # 300-2953

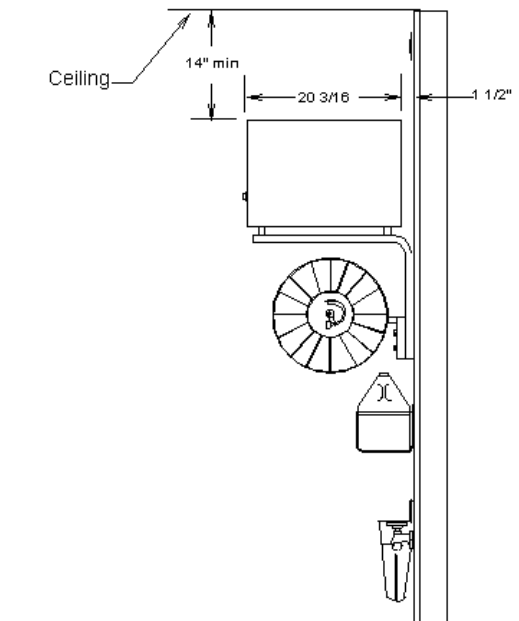




TOP VIEW



FRONT VIEW



SIDE VIEW

## Equipment Specifications

### Clearances

|            |           |
|------------|-----------|
| Left side  | 12"/30 cm |
| Right side | 12"/30 cm |
| Overhead   | 14"/35 cm |
| Floor      | 36"/91 cm |
| Front      | 36"/91 cm |

### Plumbing

3/4"/2cm Hose Bib with  
5gpm/.14Lpm  
@ 30psi/20.6bars. 120°F/49°C

### Electrical

115V, 16A dedicated circuit or  
208-230V, 15A GFCI.

## Installation Specifications

### Electrical:

One (1) 115V, 60hz, single phase, 20A, 'Dedicated Circuit' with standard receptacle. NOTE: For 208V or 230V units a 15A wall receptacle is required.

### Water:

One (1) warm water outlet 120°F/49°C MAX with standard 3/4"/1.9cm hose bib with shut-off valve. A pressure gauge in the water line can be helpful although it is not mandatory. A minimum of 5 gal. / 19L per minute and a line pressure not less than 30psi/20.6bars, is required.

### Location:

Heated utility room or closet with ventilation. Minimum 14in/.35m clearance above unit required to remove cover. The cover must be removed for servicing the unit. The unit can be serviced without removing it from the wall.

### General Recommendations:

Floor drains are essential in new facilities to receive the greatest utilization and maximum efficiency of your SPRAY MASTER Pressure Washer. Floor materials and wall coverings which can be cleaned with pressurized water are desirable. Locate electrical outlets above washing areas.



300-5391

2.2 gpm / 8.3 lpm @ 1100 psi / 76 bars, 115V

2.2 gpm / 8.3 lpm @ 1000 psi / 69 bars, 208V

2.9 gpm / 11 lpm @ 850 psi / 59 bars, 115V

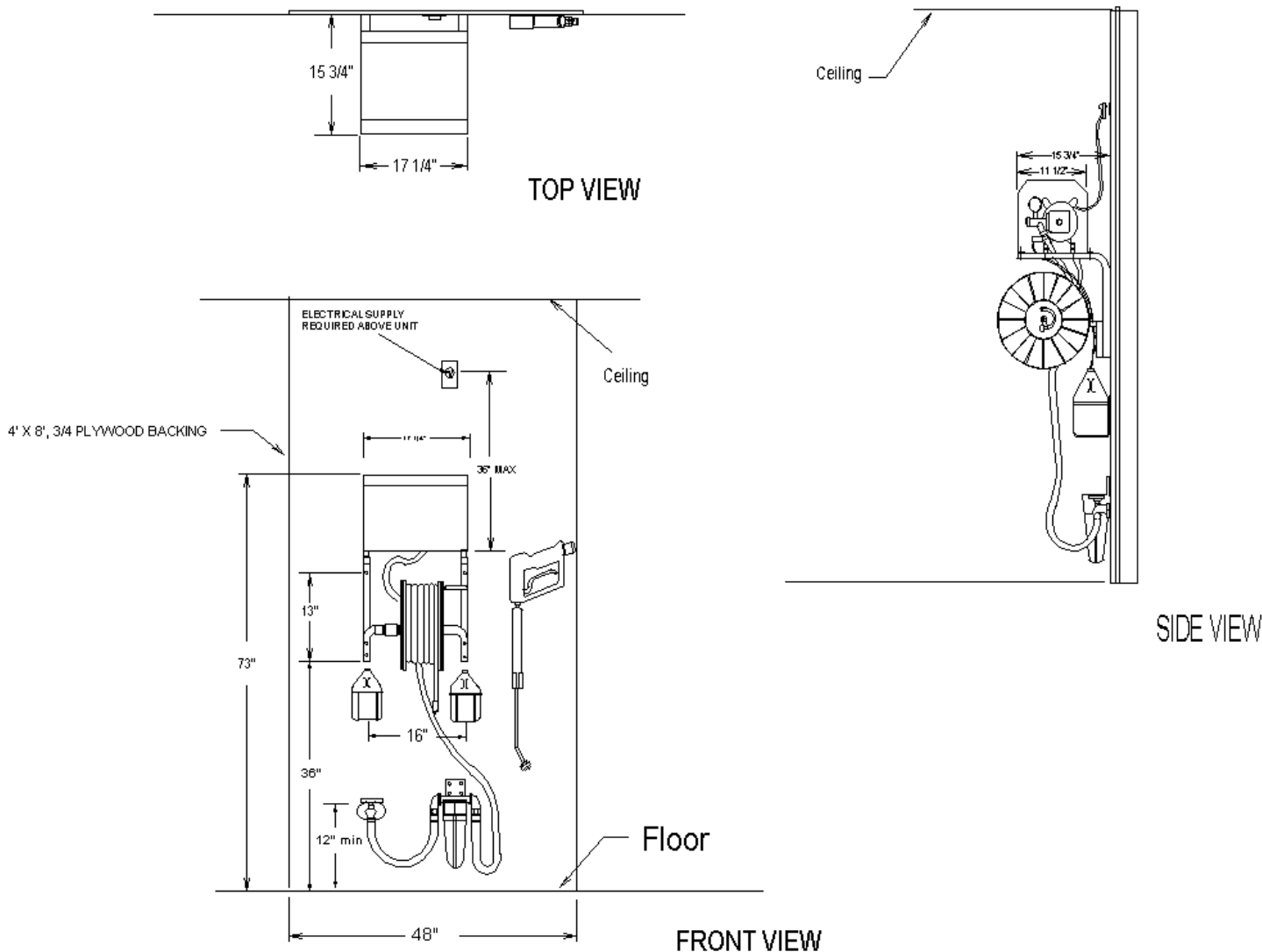
2.9 gpm / 11 lpm @ 800 psi / 55 bars, 208V

## FEATURES

- 2 hp motor TEFC, 1725 rpm, 1 phase draws 15A
- 3 cylinder CAT® super flow plunger pump
- Stainless steel hose hanger
- Quick coupler set (connects hose to unit)
- Quick coupler set (connects gun to hose)
- 50 ft / 15.3 m high pressure hose (steel-braided)
- Adjustable chemical injector
- 1 chemical basket, 1gal/3.8L
- Pressure gauge, 2000 psi / 138 bars, liquid-filled
- Stainless steel cover and frame
- Steel wall mount brackets with gun hanger
- 6 ft/2m - water inlet supply hose
- 4 ft/1.3m cord with GFC
- Maintenance kit: water filter, replacement filter and 2 hydraulic oils
- ETL-CSA listed to UL 1776
- Shipping weight: 239 lb / 104.3 kg
- 24" heat guard spray gun

**Included: # 300-0392  
24" Spray Gun with  
Vari-nozzle**





## Equipment Specifications

### Clearances

|            |           |
|------------|-----------|
| Left side  | 12"/30 cm |
| Right side | 12"/30 cm |
| Overhead   | 14"/35 cm |
| Floor      | 36"/91 cm |
| Front      | 36"/91 cm |

### Plumbing

3/4"/2cm Hose Bib with  
5gpm/.14Lpm  
@ 30psi/20.6bars. 120°F/49°C

### Electrical

115V, 16A dedicated circuit or  
208, 15A GFCI.

## Installation Specifications

### Electrical:

One (1) 115V, 60hz, single phase, 20A, 'Dedicated Circuit' with standard receptacle. NOTE: For 208V units a 15A wall receptacle is required.

### Water:

One (1) warm water outlet 120°F/49°C MAX with standard 3/4"/1.9cm hose bib with shut-off valve. A pressure gauge in the water line can be helpful although it is not mandatory. A minimum of 5 gal. / 19L per minute and a line pressure not less than 30psi/20.6bars, is required.

### Location:

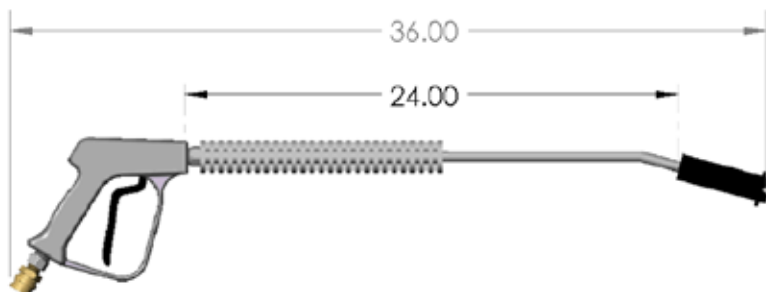
Heated utility room or closet with ventilation. Minimum 14in/.35m clearance above unit required to remove cover. The cover must be removed for servicing the unit. The unit can be serviced without removing it from the wall.

### General Recommendations:

Floor drains are essential in new facilities to receive the greatest utilization and maximum efficiency of your SPRAY MASTER Pressure Washer. Floor materials and wall coverings which can be cleaned with pressurized water are desirable. Locate electrical outlets above washing areas.

## FEATURES

- Trigger Gun
- 24" Stainless Steel, Bent, Insulated Grip
- Vari Nozzle 1.4
- Flow Thru Quick Connect
- 2.2 gpm
- Weight: 5 lbs.



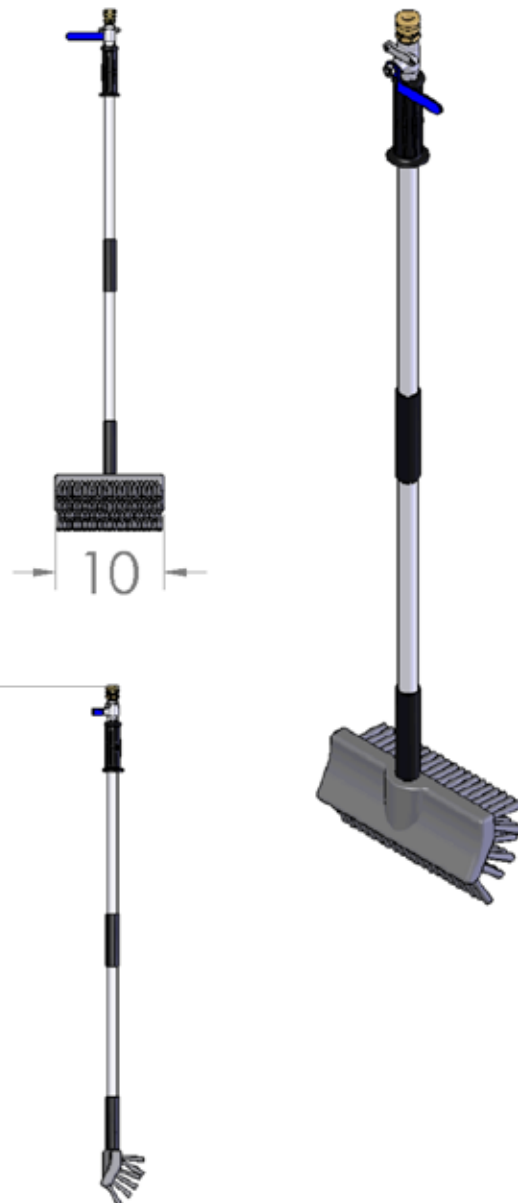


## FEATURES

- 10" brush with flow-through head
- 90° shut-off Valve
- 47" Overall Length
- 36" Aluminum Lance
- Stainless Steel Ball Valve
- Shut-Off or Flow-Thru, Quick Connect Socket
- 10" Brush Head with Nylon Bristles

For Central Systems

## SMT-Wall and Tile Brush Drawings



### RELATED PRODUCTS

Heavy Duty Hose Reel /Surface Mount Remote Station



FEATURES

- Heavy Duty Spray Gun with Quick Coupler
- Standard 10 ft Flexible High Pressure Hose Optional Custom Length up to 100 ft
- Rearacing Jets Pull Cleaning Nozzle Through
- Forward Jet Clears Clog



SMT-Trap Shooter Drawing

HOSE, HI-PRESSURE, 1/4"-10', 1/4" MPT FITTINGS (X2), SWIVEL FITTINGS ONE END

GUN, SPRAY, TRIGGER, 3/8" FPT IN, 1/4" FPT OUT

NIPPLE, HEX, 3/8" BRASS

QUICK CONNECT, S/O, 3/8" FPT, BRASS

NOZZLE, SEWER CLEANER, #5.5 FOR TRAP SHOOTER

## A perfect portable that fits any budget.



If you lack the space for a wall-mount and the budget for a central system, then a SMT commercial grade portable unit may be what you need.

SMT created the 600PEW-HD because our clients needed a top of the line electric portable pressure washer that not only was easy to maneuver and withstand rough exterior terrain, but was also efficient and effective like SMT wall-mount systems.

With the new 10" fixed locking pneumatic casters and a one-piece solid caster mount frame, the 600PEW-HD will be able to withstand the tough conditions of exterior cleaning.

**300-5053** 2.2 GPM / 8.3 lpm @ 1100 PSI / 76 bars, 115V

### Technical Specifications

- 1100 PSI / 2.2 GPM
- 850 PSI / 2.9 GPM
- Totally Enclosed & Fan Cooled
- 2 HP Baldor Motor
- 3 Cylinder CAT Plunger Pump
- Dual Chemical Injection
- 120° F / 49° C Max

### Features

- 24" Heat Guard Spray Wand
- 30' Steel Braided Industrial Hose
- 35' GFCI Power Cord
- Rust Free Hose Reel
- Anti-Back Flow Protection
- Stainless Steel Construction
- Thermal Limit Switch

## If you must have a portable for your interior space, then consider the 600PEW - "the 600W on wheels."

The 600PEW portable system is specifically designed for institutional use. It features an industrial 3 cylinder plunger pump powered by a 2HP enclosed motor. The 600PEW's adjustable soap and sanitizer selectors feature a flush system so that swapping between chemicals is quick and safe. Like our 600W wall-mount system, the 600PEW has the added safety features to protect you and the system; features such as a thermal limit switch, anti-backflow protection, and a water-level float switch. It's easy to maneuver wheel and frame set, make this unit perfect for interior use.

### Technical Specifications

- 1100 PSI / 2.2 GPM
- 850 PSI / 2.9 GPM
- Totally Enclosed & Fan Cooled
- 2 HP Baldor Motor
- 3 Cylinder CAT Plunger Pump
- Dual Chemical Injection
- 120° F / 49° C Max

### Features

- 24" Heat Guard Spray Gun
- 30' Steel Braided Industrial Hose
- 35' GFCI Power Cord
- Rust Free Hose Reel
- Anti-Siphon and Backflow Protection
- Stainless Steel Construction
- Thermal Limit Switch



**300-5050** 2.2 GPM / 8.3 lpm @ 1100 PSI / 76 bars, 115V

# Cost Savings, SMT vs Hose

SAVE OVER \$12,000 A YEAR BY SWITCHING TO SMT!

## BOTTOM LINE:



100 Animal Enclosures  
100% Occupancy  
Cleaning 1x per day

**TOTAL DAILY SAVINGS USING SMT**

TOTAL DAILY COST

\$17.63

\$53.01

TOTAL ANNUAL COST

\$6,435.89

\$19,349.349

**66.67%**

## the BREAKDOWN:



### DISPENSING OF CHEMICAL

|                               |                    |              |                    |              |              |
|-------------------------------|--------------------|--------------|--------------------|--------------|--------------|
| Total <b>WATER</b> Usage      | 10 seconds @ 2 gpm | 33 gallons   | 10 seconds @ 8 gpm | 130 gallons  | <b>74.6%</b> |
| Total <b>SEWAGE</b> Usage     | 10 seconds @ 2 gpm | 33 gallons   | 10 seconds @ 8 gpm | 130 gallons  | <b>74.6%</b> |
| Total <b>CHEMICAL</b> Usage   | 2 oz. per gallon   | 0.5 gallons  | 2 oz. per gallon   | 2 gallons    | <b>74.6%</b> |
| Total <b>TIME</b> to Dispense | 10 seconds/kennel  | 16.7 minutes | 10 seconds/kennel  | 16.7 minutes | <b>0.0%</b>  |



### RINSING OF CHEMICAL

|                            |                    |            |                    |             |              |
|----------------------------|--------------------|------------|--------------------|-------------|--------------|
| Total <b>WATER</b> Usage   | 20 seconds @ 2 gpm | 66 gallons | 30 seconds @ 8 gpm | 400 gallons | <b>83.5%</b> |
| Total <b>SEWAGE</b> Usage  | 20 seconds @ 2 gpm | 66 gallons | 30 seconds @ 8 gpm | 400 gallons | <b>83.5%</b> |
| Total <b>TIME</b> to Rinse | 20 seconds/kennel  | 33 minutes | 30 seconds/kennel  | 50 minutes  | <b>33.3%</b> |



### TOTAL CLEANING PROTOCOL

|                             |             |              |              |
|-----------------------------|-------------|--------------|--------------|
| Daily <b>WATER</b> Usage    | 99 gallons  | 530 gallons  | <b>81.3%</b> |
| Daily <b>SEWAGE</b> Usage   | 99 gallons  | 530 gallons  | <b>81.3%</b> |
| Daily <b>CHEMICAL</b> Usage | 0.5 gallons | 2 gallons    | <b>74.6%</b> |
| Daily <b>TIME</b> to Clean  | 50 minutes  | 66.7 minutes | <b>25.0%</b> |



### TOTAL COST OF DAILY CLEANING

|                                     |                        |         |                         |         |              |
|-------------------------------------|------------------------|---------|-------------------------|---------|--------------|
| Cost of Daily <b>WATER</b> Usage    | \$3.13*/1,000 gallons  | \$0.31  | \$3.13/1,000 gallons    | \$0.31  | <b>81.3%</b> |
| Cost of Daily <b>SEWAGE</b> Usage   | \$3.47*/1,000 gallons  | \$0.34  | \$3.13/1,000 gallons    | \$0.31  | <b>81.3%</b> |
| Cost of Daily <b>CHEMICAL</b> Usage | \$20/gallon @ 0.5 gal. | \$10.31 | \$20/gallon @ 2 gal.    | \$40.63 | <b>74.6%</b> |
| Cost of Daily <b>LABOR</b>          | \$8.00/hour @ 50 min.  | \$6.67  | \$8.00/hour @ 66.7 min. | \$8.89  | <b>25.0%</b> |

**INCREASE YOUR PROFITS USE SMT**

\*Average cost, varies by city.

**Note:** This does not take into account the amount of hand scrubbing time per enclosure needed when using a traditional hose.

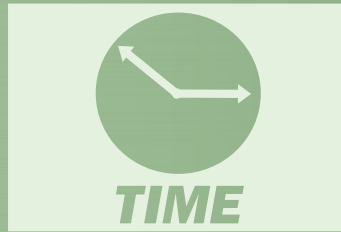
**TOUGH VIRUSES  
AND BACTERIA?**

**BE TOUGHER  
USE SMT**



**SMT is your GREEN Choice, because Spray Master Technologies:**

**SAVES**



[www.kennelcleaning.com](http://www.kennelcleaning.com)

115 E. Linden Street  
Rogers, Arkansas 72756  
(479) 636-5776  
(800) 548-3373  
001 479 636 5776  
(479) 636-3245 fax

Spray Master Technologies - Animal Care

SMT-2016 AC Catalog 160106

Prices and specifications subject to change without notice.  
Printed in the USA.

